

**INSTRUCTORS & PERFORMERS**

As we prepare for our 28<sup>th</sup> annual **Buckeye Dulcimer Festival** our plan, as always, is to bring to you the best instructors possible. Many of these wonderful folks have been suggested by you as favorites. This year's instructors for the **EXTENDED SESSIONS** are:

**Mountain Dulcimer**

**Joe Steiner – Beginner – if 5 in class**  
**Diane Hochstetler – Past Beginner/Early Intermediate**  
**Aaron O'Rourke – Intermediate II & Advanced**  
**Linda Brockinton – Intermediate II & Advanced**

The **Intermediate II** and **Advanced** mountain dulcimer players will have the opportunity to work one day with **Aaron** and one day with **Linda**.

**Hammered Dulcimer**

**Chris Steiner – Beginner – if 5 in class**  
**Pam Bowman – Past Beginner/Early Intermediate**  
**Jody Marshall – Intermediate II & Advanced**  
**Mark Wade – Intermediate II & Advanced**

The **Intermediate II** and the **Advanced** hammered dulcimer participants will be studying one day with **Jody** and one day with **Mark**.

**Other Instruments**

**Band-it! – Shari Wolf, Beyond Basics – all instruments**  
**Phyllis Davis will be assisting the Autoharps**

**Harp – Allison Miller, Intermediate & Above**

**SATURDAY – All Instrument Jam in the morning**  
**Mini-sessions for MD, HD, Autoharp, Pennywhistle**

**BEGINNER SESSIONS (3 ½ hours)**

**Mountain Dulcimer – Ricki Spicer**  
**Hammered Dulcimer – Jill Nichols**  
**Autoharp – Phyllis Davis**

**Check our website for updates!**

**Check our website [www.buckeyedulcimerfestival.com](http://www.buckeyedulcimerfestival.com) for instructor bios, class descriptions & schedules.**

**TENTATIVE FESTIVAL SCHEDULE – 2019**

**EXTENDED PACKAGES #1 & #2**

Wednesday, March 6<sup>th</sup>

**2:00 pm** Registration begins  
**5:30 pm** DINNER  
**7:00 pm** Introduction & Orientation  
**8:00 pm** Workshops & Jamming!

Thursday, March 7<sup>th</sup> **9:00 am – 12:00 pm**

**Workshop Sessions**

**Mountain Dulcimer**

Beginner Joe Steiner  
 Past Beginner Diane Hochstetler  
 Intermediate II Aaron O'Rourke (One day each)  
 Advanced Linda Brockinton

**Hammered Dulcimer**

Beginner Chris Steiner  
 Past Beginner Pam Bowman  
 Intermediate II Jody Marshall (One day each)  
 Advanced Mark Wade

**Harp** Allison Miller  
 Intermediate & Above

**"Band-It!"** Shari Wolf  
 All Instruments  
 Past Beginner & Above

12:00 - 1:00 pm LUNCH

1:15 - 3:15 pm **Intensive sessions (con't.)**  
 4:00 - 5:00 pm Open Stage  
 5:30 pm DINNER  
 7:00 pm Workshops & Jamming!

**BUCKEYE DULCIMER FESTIVAL  
 T - SHIRT & SWEATSHIRT**

The shirt design, for the 28<sup>th</sup> annual **BUCKEYE DULCIMER FESTIVAL** will soon be shown on our website:

[www.buckeyedulcimerfestival.com](http://www.buckeyedulcimerfestival.com)

To ensure that we have enough shirts and the right sizes, we're asking that you pre-order your T-shirt or sweatshirt on the Registration Form.

**No shirt orders will be accepted after February 20<sup>th</sup>**

**WEEKEND PACKAGES #3 & #4**

Friday, March 8<sup>th</sup>

9:00 - 12:00 pm **Intensive sessions (con't.)**  
 12:00 - 1:00 pm LUNCH  
 1:15 - 3:15 pm **Intensive sessions (con't.)**

**3:00 pm** **Registration for the Weekend Package begins**

4:00 - 5:00 pm Open Stage  
 5:00 pm DINNER  
 7:00 pm **Instructors' Concert**

Saturday, March 9<sup>th</sup>

9:00 - 11:45 am Sessions (see schedule)

11:45 - 1:15 pm LUNCH

1:15 - 4:00 pm Sessions (see schedule)  
 4:15 - 5:00 pm **Always a Surprise**  
 5:00pm DINNER  
 7:00 pm **Instructors' Concert**

Sunday March 10<sup>th</sup>

7:00 am Cffee and Donuts  
 7:30 am Morning Devotions  
 (non-denominational)  
 8:30 am Gospel Sing  
 9:30 am Brunch, Raffle, & Good-Byes

\*\*\*\*\*

For more information about:  
**BUCKEYE DULCIMER FESTIVAL**  
 call or write  
 Shari Wolf or Joyce Harrison, Co-Directors  
 4848 Johns Road  
 Houston, OH 45333  
 Phone:  
 (937) 295-5253 (home)  
 (937) 216-5176 (Shari's cell)  
 (937) 216-2002 (Joyce's cell)  
 e-mail: [buckeyedulcimer@yahoo.com](mailto:buckeyedulcimer@yahoo.com)

For updates — see  
[www.buckeyedulcimerfestival.com](http://www.buckeyedulcimerfestival.com)

Final Registration Deadline: **March 1, 2019** or until filed.

**28<sup>th</sup> Annual  
 Buckeye Dulcimer Festival**

Linda Brockinton Jody Marshall  
 Aaron O'Rourke Mark Wade  
 Diane Hochstetler Pam Bowman  
 Joe Steiner Chris Steiner  
 Allison Miller Shari Wolf  
**Phyllis Davis**

**Great Instructors  
 Instructor Led Jams  
 Fun, Lifetime Friends  
 March 6 – 10, 2019  
 at  
 Recreation Unlimited  
 Ashley, OH**

Shari Wolf/Joyce Harrison  
 Co-Directors  
 937-295-5253  
[buckeyedulcimer@yahoo.com](mailto:buckeyedulcimer@yahoo.com)  
[www.buckeyedulcimerfestival.com](http://www.buckeyedulcimerfestival.com)

## BUCKEYE DULCIMER FESTIVAL

...is a unique opportunity for acoustic instrument players to learn, listen, and play together. We're working hard to make your music experience a rewarding one.

Our Thursday & Friday *extended sessions* include 5 hours each day of in-depth, intensive instruction for Mountain and Hammered Dulcimer, Harp; and the "Band-it!" workshop for all acoustic instruments. In addition to the workshops, there are opportunities for a variety of jams; a slower jam for those who enjoy a moderate tempo, and another for those who love the 'high speed jammin'. Watch our website for other opportunities. We invite you to join us for a fun and learning experience.

On Friday afternoon, the extended session BUCKEYE DULCIMER FESTIVAL shifts gears to take on the look of a weekend festival including the Friday night instructors' concert.

Four workshop sessions on Saturday cover all ability levels of the mountain and hammered dulcimer plus other traditional instruments. Saturday's schedule continues with a relaxing 'kick-back' afternoon, and another instructors' concert at 7:00 pm.

### SATURDAY SCHEDULE INCLUDES...

**3 ½ HOUR BEGINNER SESSIONS** for Mountain Dulcimer – Hammered Dulcimer – Autoharp

Beginning players will have the opportunity to work with one instructor for three sessions (both morning sessions and the first afternoon session). This is a great opportunity for people who have always wanted to try a new instrument.

The festival concludes on Sunday with Morning Devotions, the traditional Gospel Sing, Brunch, and the Raffle Drawing.

Vendors and instrument builders will be present for the weekend event, so you will have an excellent opportunity to purchase musical instruments, supplies, books, and CDs throughout the weekend.

Pre-Registration is a MUST. Return the enclosed registration form today to reserve your spot for learning, fun, and fellowship!

Due to Recreation Unlimited's regulations, anyone attending under the age of 18 must be accompanied and supervised at all times by an adult.

### EARLY BIRD REGISTRATION FEE OPTIONS!

We are pleased to again offer you "Early Bird" pricing options for Buckeye Dulcimer Festival 2019.

For participants who register and pay, **IN FULL, before December 10, 2018**, there are discounted fees. Be sure to read your registration form carefully.

And be sure to write your checks payable to

**BUCKEYE DULCIMER FESTIVAL, LLC**

BUCKEYE DULCIMER FESTIVAL  
will be held at



...a nonprofit organization providing programs in sports, recreation and education for individuals with physical and developmental disabilities and other health concerns. In addition, the beautiful campus and facilities are available for a variety of other activities including school group outings, corporate team building, conferences and workshops.

This year-round campus features a 20,000 square foot Life Center, three major residence halls, private housing cottage, multi-purpose Lodge, Creative Center, Dining Hall, Health Services Center, administrative and support buildings.

**Location: Recreation Unlimited is located 35 minutes northeast of Columbus, on Piper Road, 3 miles south of SR 229 between Ashley, Ohio and I-71 north of Columbus, Ohio.**

## HOUSING ... STAY WITH US AT RECREATION UNLIMITED (Dorm or Semi-private housing) ... MOTEL IT! ... COMMUTE FROM HOME

**This Year We Have Additional Housing Options.**

**DORM STYLE:** There are 3 Residence Halls (A, B, and C) that consist of two wings with a large lounge and restrooms in the central area. Each cabin can house approximately 48 participants ... 24 in each wing.

**Cabin B has been designated as our 'couples' cabin. Gents are housed in one wing and ladies in the other.**

**No one sleeps in an upper bunk. There are hospital beds with electric raise/lower features available.**

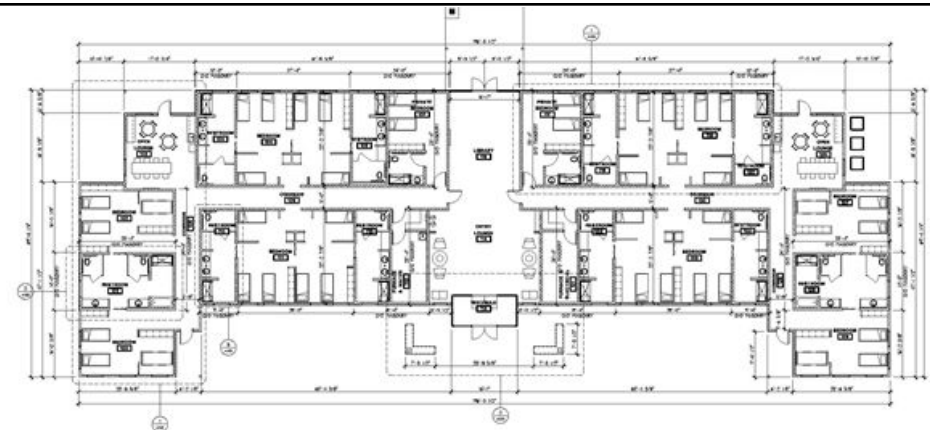
**There is plenty of electric outlets to accommodate CPAP machines.**

**SEMI-PRIVATE ACCOMMODATIONS:** The Greif House providing semi-private housing options to participants just opened Spring, 2018.

**This new building provides a fine alternative to 'dorm' housing without driving to and from a motel for a price very competitive to motel rates. The Greif House provides semi-private housing for 2, 3, or 6 people including full restroom facilities.**

**Full pricing details are shown on the Registration Form included with this brochure.**

**If you have any other questions, feel free to call 937-295-5253 for your answers.**



**Included in your confirmation letter, you'll find a listing of things that will make your stay a pleasant one.**